

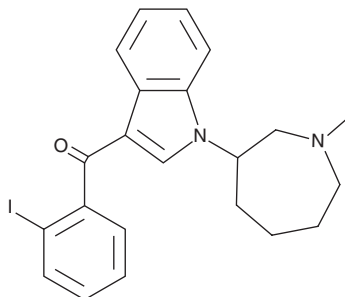
PRODUCT INFORMATION



AM2233 azepane isomer

Item No. 11584

CAS Registry No.: 1432478-91-5
Formal Name: (2-iodophenyl)(1-(1-methylazepan-3-yl)-1H-indol-3-yl)methanone
MF: C₂₂H₂₃IN₂
FW: 458.3
Purity: ≥98%
UV/Vis.: λ_{max}: 213, 252, 316 nm
Supplied as: A solution in methanol
Storage: -20°C
Stability: ≥4 years



Information represents the product specifications. Batch specific analytical results are provided on each certificate of analysis.

Description

AM2233 (Item No. 11008) is a synthetic cannabinoid (CB) which acts as a full agonist of the central CB₁ receptor (K_i = 2.8 nM).¹ AM2233 azepane isomer is an isomer of AM2233 in which the piperidine group has been replaced with azepane. The physiological and toxicological properties of this compound have not been explored. This product is intended for forensic and research applications.

Reference

1. Deng, H., Gifford, A.N., Zvonok, A.M., *et al.* Potent cannabinergic indole analogues as radioiodinatable brain imaging agents for the CB₁ cannabinoid receptor. *J. Med. Chem.* **48**, 6386-6392 (2005).

WARNING

THIS PRODUCT IS FOR RESEARCH ONLY - NOT FOR HUMAN OR VETERINARY DIAGNOSTIC OR THERAPEUTIC USE.

SAFETY DATA

This material should be considered hazardous until further information becomes available. Do not ingest, inhale, get in eyes, on skin, or on clothing. Wash thoroughly after handling. Before use, the user must review the [complete](#) Safety Data Sheet, which has been sent via email to your institution.

WARRANTY AND LIMITATION OF REMEDY

Buyer agrees to purchase the material subject to Cayman's Terms and Conditions. Complete Terms and Conditions including Warranty and Limitation of Liability information can be found on our website.

Copyright Cayman Chemical Company, 07/18/2023

CAYMAN CHEMICAL

1180 EAST ELLSWORTH RD
ANN ARBOR, MI 48108 · USA

PHONE: [800] 364-9897
[734] 971-3335

FAX: [734] 971-3640

CUSTSERV@CAYMANCHEM.COM
WWW.CAYMANCHEM.COM