

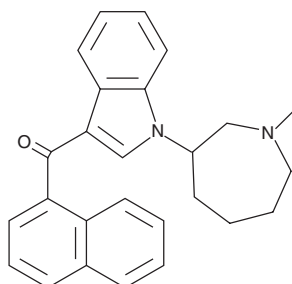
PRODUCT INFORMATION



AM1220 azepane isomer

Item No. 11583

CAS Registry No.: 1348081-04-8
Formal Name: (1-((1-methylazepan-3-yl)methyl)-1H-indol-3-yl)(naphthalen-1-yl) methanone
MF: C₂₆H₂₆N₂O
FW: 382.5
Purity: ≥98%
UV/Vis.: λ_{max}: 218, 247, 316 nm
Supplied as: A 10 mg/ml solution in methanol
Storage: -20°C
Stability: ≥4 years



Information represents the product specifications. Batch specific analytical results are provided on each certificate of analysis.

Description

AM1220 is a synthetic cannabinoid (CB) with preference for the central CB₁ receptor (K_i = 3.88 nM) over the peripheral CB₂ receptor (K_i = 73.4 nM).¹ AM1220 azepane isomer is an isomer of AM1220 in which the piperidine group has been replaced with azepane. The physiological and toxicological properties of this compound have not been explored. This product is intended for forensic and research applications.

Reference

1. Makriyannis, A. and Deng, H. Cannabimimetic indole derivatives. WO 01/28557 A1 (2001), 1-25, PCT/US00/28832.

WARNING

THIS PRODUCT IS FOR RESEARCH ONLY - NOT FOR HUMAN OR VETERINARY DIAGNOSTIC OR THERAPEUTIC USE.

SAFETY DATA

This material should be considered hazardous until further information becomes available. Do not ingest, inhale, get in eyes, on skin, or on clothing. Wash thoroughly after handling. Before use, the user must review the [complete](#) Safety Data Sheet, which has been sent via email to your institution.

WARRANTY AND LIMITATION OF REMEDY

Buyer agrees to purchase the material subject to Cayman's Terms and Conditions. Complete Terms and Conditions including Warranty and Limitation of Liability information can be found on our website.

Copyright Cayman Chemical Company, 11/21/2025

CAYMAN CHEMICAL

1180 EAST ELLSWORTH RD
ANN ARBOR, MI 48108 · USA

PHONE: [800] 364-9897
[734] 971-3335

FAX: [734] 971-3640

CUSTSERV@CAYMANCHEM.COM
WWW.CAYMANCHEM.COM