

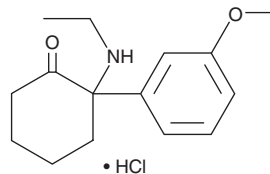
PRODUCT INFORMATION



Methoxetamine (hydrochloride)

Item No. 11139

CAS Registry No.: 1239908-48-5
Formal Name: 2-(ethylamino)-2-(3-methoxyphenyl)-cyclohexanone, monohydrochloride
Synonyms: 3-methoxy-2-oxo PCE, MXE
MF: C₁₅H₂₁NO₂ • HCl
FW: 283.8
Purity: ≥98%
UV/Vis.: λ_{max}: 203, 279 nm
Supplied as: A crystalline solid
Storage: -20°C
Stability: ≥5 years



Information represents the product specifications. Batch specific analytical results are provided on each certificate of analysis.

Description

Ketamine is an NMDA receptor antagonist and, depending on dose, can cause pain suppression, tachycardia, and hypertension, as well as altered perception, memory, and cognition.¹⁻² Methoxetamine is a 3-methoxy, N-ethyl analog of ketamine which, like ketamine, has been abused recreationally.³⁻⁶ Symptoms of toxicity, present following abuse, are similar to those seen with ketamine, including a dissociative or catatonic state, analgesia, tachycardia, hypertension, nausea, and vomiting.^{3,6} Pharmacology, toxicology, and safety of this compound are not known. Methoxetamine is regulated as a Schedule I compound in the United States. This product is intended for forensic and research applications.

References

1. Chakraborty, K., Neogi, R., and Basu, D. Club drugs: Review of the 'rave' with a note of concern for the Indian scenario. *Indian J. Med. Res.* **133(6)**, 594-604 (2011).
2. Quibell, R., Prommer, E.E., Mihalyo, M., et al. Ketamine. *J. Pain Symptom Manage.* **41(3)**, 640-649 (2011).
3. Hofer, K.E., Grager, B., Müller, D.M., et al. Ketamine-like effects after recreational use of methoxetamine. *Ann. Emerg. Med.* **60(1)**, 97-99 (2012).
4. Winstock, A.R. and Mitcheson, L. New recreational drugs and the primary care approach to patients who use them. *BMJ* **344**, e288 (2012).
5. Corazza, O., Schifano, F., Simonato, P., et al. Phenomenon of new drugs on the internet: The case of ketamine derivative methoxetamine. *Hum. Psychopharmacol.* **27(2)**, 145-149 (2012).
6. Wood, D.M., Davies, S., Puchnarewicz, M., et al. Acute toxicity associated with the recreational use of the ketamine derivative methoxetamine. *Eur. J. Clin. Pharmacol.* **68(5)**, 853-856 (2012).

WARNING

THIS PRODUCT IS FOR RESEARCH ONLY - NOT FOR HUMAN OR VETERINARY DIAGNOSTIC OR THERAPEUTIC USE.

SAFETY DATA

This material should be considered hazardous until further information becomes available. Do not ingest, inhale, get in eyes, on skin, or on clothing. Wash thoroughly after handling. Before use, the user must review the [complete](#) Safety Data Sheet, which has been sent via email to your institution.

WARRANTY AND LIMITATION OF REMEDY

Buyer agrees to purchase the material subject to Cayman's Terms and Conditions. Complete Terms and Conditions including Warranty and Limitation of Liability information can be found on our website.

Copyright Cayman Chemical Company, 07/07/2023

CAYMAN CHEMICAL

1180 EAST ELLSWORTH RD
ANN ARBOR, MI 48108 · USA

PHONE: [800] 364-9897
[734] 971-3335

FAX: [734] 971-3640

CUSTSERV@CAYMANCHEM.COM
WWW.CAYMANCHEM.COM