

# PRODUCT INFORMATION



## $\alpha$ -methyl Tryptamine (hydrochloride)

Item No. 11135

CAS Registry No.: 879-36-7

Formal Name:  $\alpha$ -methyl-1H-indole-3-ethanamine,  
monohydrochloride

Synonyms: Indopan,  $\alpha$ -MT

MF:  $C_{11}H_{14}N_2 \cdot HCl$

FW: 210.7

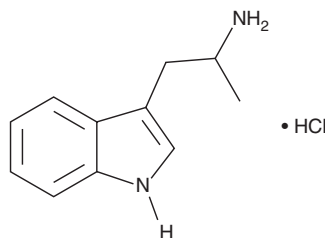
Purity:  $\geq 98\%$

UV/Vis.:  $\lambda_{max}$ : 220, 281, 290 nm

Supplied as: A crystalline solid

Storage:  $-20^{\circ}C$

Stability: As supplied, 2 years from the QC date provided on the Certificate of Analysis, when stored properly



### Description

$\alpha$ -methyl Tryptamine (hydrochloride) is a psychedelic drug that has schedule I status in the United States. It potently stimulates the release of monoamines from synaptosomes and inhibits their re-uptake ( $IC_{50}$ s = 0.73, 0.38, and 0.4  $\mu M$  for dopamine, serotonin, and norepinephrine, respectively).<sup>1</sup> This product is intended for forensic use.

### Reference

1. Nagai, F., Nonaka, R., and Satoh Hisashi Kamimura, K. The effects of non-medically used psychoactive drugs on monoamine neurotransmission in rat brain. *Eur. J. Pharmacol.* **559(2-3)**, 132-137 (2007).

#### WARNING

THIS PRODUCT IS FOR RESEARCH ONLY - NOT FOR HUMAN OR VETERINARY DIAGNOSTIC OR THERAPEUTIC USE.

#### SAFETY DATA

This material should be considered hazardous until further information becomes available. Do not ingest, inhale, get in eyes, on skin, or on clothing. Wash thoroughly after handling. Before use, the user must review the [complete](#) Safety Data Sheet, which has been sent via email to your institution.

#### WARRANTY AND LIMITATION OF REMEDY

Buyer agrees to purchase the material subject to Cayman's Terms and Conditions. Complete Terms and Conditions including Warranty and Limitation of Liability information can be found on our website.

Copyright Cayman Chemical Company, 09/21/2016

#### CAYMAN CHEMICAL

1180 EAST ELLSWORTH RD  
ANN ARBOR, MI 48108 · USA

PHONE: [800] 364-9897  
[734] 971-3335

FAX: [734] 971-3640

CUSTSERV@CAYMANCHEM.COM  
WWW.CAYMANCHEM.COM