

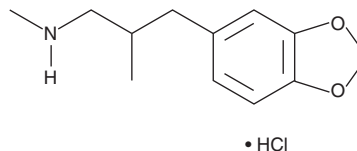
# PRODUCT INFORMATION



## 3,4-MDMA methylene homolog (hydrochloride)

Item No. 10979

**CAS Registry No.:** 1797883-86-3  
**Formal Name:** N, $\beta$ -dimethyl-1,3-benzodioxole-5-propanamine, monohydrochloride  
**Synonym:** 3,4-Methylenedioxyamphetamine methyl homolog  
**MF:** C<sub>12</sub>H<sub>17</sub>NO<sub>2</sub> • HCl  
**FW:** 243.7  
**Purity:**  $\geq$ 98%  
**UV/Vis.:**  $\lambda_{\text{max}}$ : 202, 287 nm  
**Supplied as:** A crystalline solid  
**Storage:** -20°C  
**Stability:**  $\geq$ 5 years



Information represents the product specifications. Batch specific analytical results are provided on each certificate of analysis.

### Description

MDMA is a psychoactive drug, also known as ecstasy, that is banned in most countries, including the United States. 3,4-MDMA methyl homolog (hydrochloride) is a potential designer drug created by inserting a methylene group in the methylamphetamine portion of MDMA. The biological and toxicological activities of this compound have not been evaluated. This product is to be used in the forensic analysis of samples that may contain this compound.

#### WARNING

THIS PRODUCT IS FOR RESEARCH ONLY - NOT FOR HUMAN OR VETERINARY DIAGNOSTIC OR THERAPEUTIC USE.

#### SAFETY DATA

This material should be considered hazardous until further information becomes available. Do not ingest, inhale, get in eyes, on skin, or on clothing. Wash thoroughly after handling. Before use, the user must review the [complete](#) Safety Data Sheet, which has been sent via email to your institution.

#### WARRANTY AND LIMITATION OF REMEDY

Buyer agrees to purchase the material subject to Cayman's Terms and Conditions. Complete Terms and Conditions including Warranty and Limitation of Liability information can be found on our website.

Copyright Cayman Chemical Company, 07/07/2023

#### CAYMAN CHEMICAL

1180 EAST ELLSWORTH RD

ANN ARBOR, MI 48108 · USA

**PHONE:** [800] 364-9897

[734] 971-3335

**FAX:** [734] 971-3640

CUSTSERV@CAYMANCHEM.COM

WWW.CAYMANCHEM.COM