

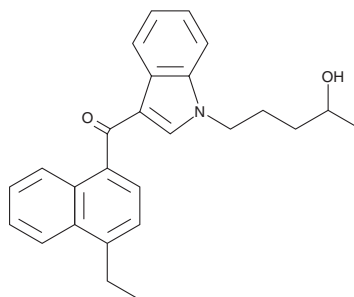
# PRODUCT INFORMATION



## JWH 210 N-(4-hydroxypentyl) metabolite

Item No. 10940

**CAS Registry No.:** 1427521-37-6  
**Formal Name:** (4-ethylnaphthalen-1-yl)  
(1-(4-hydroxypentyl)-1H-indol-3-yl)methanone  
**MF:** C<sub>26</sub>H<sub>27</sub>NO<sub>2</sub>  
**FW:** 385.5  
**Purity:** ≥95%  
**UV/Vis.:** λ<sub>max</sub>: 222, 247, 316 nm  
**Supplied as:** A crystalline solid  
**Storage:** -20°C  
**Stability:** ≥5 years



Information represents the product specifications. Batch specific analytical results are provided on each certificate of analysis.

### Description

JWH 210 is a potent cannabimimetic alkylindole that has been identified in extracts from herbal blends. Structurally and functionally similar alkylindoles are rapidly metabolized by the liver and secreted in the urine, with hydroxylation of the alkyl side chain occurring in the liver.<sup>1-3</sup> JWH 210 N-(4-hydroxypentyl) metabolite is an expected metabolite of JWH 210, detectable in the serum and urine. Its biological activities have yet to be determined. This product is intended for forensic and research applications.

### References

1. Teske, J., Weller, J.P., Fieguth, A., *et al.* Sensitive and rapid quantification of the cannabinoid receptor agonist naphthalen-1-yl-(1-pentylindol-3-yl)methanone (JWH-018) in human serum by liquid chromatography-tandem mass spectrometry. *J. Chromatogr. B Analyt. Technol. Biomed. Life Sci.* **878(27)**, 2659-63 (2010).
2. Sobolevsky, T., Prasolov, I., and Rodchenkov, G. Detection of JWH-018 metabolites in smoking mixture post-administration urine. *Forensic Sci. Int.* **200(1-3)**, 141-147 (2010).
3. Wintermeyer, A., Möller, I., Thevis, M., *et al.* In vitro phase I metabolism of the synthetic cannabimimetic JWH-018. *Anal. Bioanal. Chem.* **398(5)**, 2141-2153 (2010).

#### WARNING

THIS PRODUCT IS FOR RESEARCH ONLY - NOT FOR HUMAN OR VETERINARY DIAGNOSTIC OR THERAPEUTIC USE.

#### SAFETY DATA

This material should be considered hazardous until further information becomes available. Do not ingest, inhale, get in eyes, on skin, or on clothing. Wash thoroughly after handling. Before use, the user must review the [complete](#) Safety Data Sheet, which has been sent via email to your institution.

#### WARRANTY AND LIMITATION OF REMEDY

Buyer agrees to purchase the material subject to Cayman's Terms and Conditions. Complete Terms and Conditions including Warranty and Limitation of Liability information can be found on our website.

Copyright Cayman Chemical Company, 06/22/2023

#### CAYMAN CHEMICAL

1180 EAST ELLSWORTH RD  
ANN ARBOR, MI 48108 · USA

**PHONE:** [800] 364-9897  
[734] 971-3335

**FAX:** [734] 971-3640

CUSTSERV@CAYMANCHEM.COM  
WWW.CAYMANCHEM.COM