

# PRODUCT INFORMATION



## SUCNR1 Polyclonal Antibody

Item No. 10928

### Overview and Properties

**Contents:** This vial contains 100 µg in 200 µl of PBS containing 0.05% BSA and 0.05% sodium azide.

**Synonym:** GPR91

**Immunogen:** A portion of amino acids 100-150 of human SUCNR1

**Species Reactivity:** (+) Human, chimpanzee, new world monkey; other species not tested

**Form:** Liquid

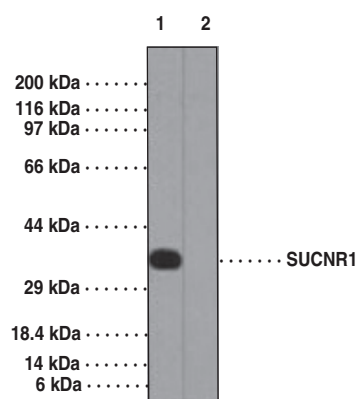
**Storage:** 4°C (as supplied)

**Stability:** ≥1 year

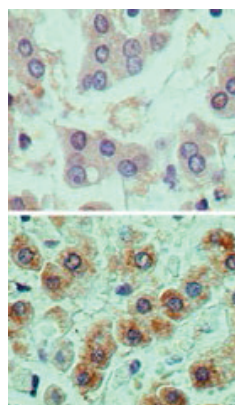
**Host:** Rabbit

**Applications:** Western blot (WB) and immunohistochemistry (IHC); the recommended starting dilution is 0.25-0.5 µg/ml for WB and 5-10 µg/ml for IHC. Other applications were not tested, therefore optimal working concentration/dilution should be determined empirically.

### Images



Lane 1: Human kidney lysate (absence of immunizing peptide)  
Lane 2: Human kidney lysate (presence of immunizing peptide)



Immunohistochemical analysis of SUCNR1 in formalin-fixed, paraffin-embedded human liver tissue using an isotype control (top) and SUCNR1 (bottom) at 5 µg/ml.

**WARNING**  
THIS PRODUCT IS FOR RESEARCH ONLY - NOT FOR HUMAN OR VETERINARY DIAGNOSTIC OR THERAPEUTIC USE.

**SAFETY DATA**  
This material should be considered hazardous until further information becomes available. Do not ingest, inhale, get in eyes, on skin, or on clothing. Wash thoroughly after handling. Before use, the user must review the [complete](#) Safety Data Sheet, which has been sent via email to your institution.

**WARRANTY AND LIMITATION OF REMEDY**  
Buyer agrees to purchase the material subject to Cayman's Terms and Conditions. Complete Terms and Conditions including Warranty and Limitation of Liability information can be found on our website.

Copyright Cayman Chemical Company, 02/28/2022

**CAYMAN CHEMICAL**  
1180 EAST ELLSWORTH RD  
ANN ARBOR, MI 48108 · USA  
PHONE: [800] 364-9897  
[734] 971-3335  
FAX: [734] 971-3640  
CUSTSERV@CAYMANCHEM.COM  
WWW.CAYMANCHEM.COM

# PRODUCT INFORMATION



## Description

---

SUCNR1 is a 334 amino acid-containing membrane receptor, belonging to the G-protein coupled receptor 1 family, characterized by an extracellular N terminus, seven transmembrane regions, and an intracellular C terminus and playing a role in cell communication.<sup>1,2</sup> SUCNR1 is a receptor for the citric acid cycle intermediate succinate. It functions in establishing a neovascular network during development and in response to injury. SUCNR1, in response to increased succinate levels, regulates the production of numerous angiogenic factors, including VEGF, and also is involved in the modulation of platelet function. It is known to play an essential role in proliferative ischemic retinopathy and is an attractive target for treating diseases that stem from aberrant neovascularization in the mature retina such as diabetic retinopathy. Expression of SUCNR1 is common in kidney, liver, retina, platelets, and leukocytes.

## References

---

1. He, W., Miao, F.J., Lin, D.C., *et al.* Citric acid cycle intermediates as ligands for orphan G-protein-coupled receptors. *Nature* **429(6988)**, 188-93 (2004).
2. Wittenberger, T., Schaller, H.C., and Hellebrand, S. An expressed sequence tag (EST) data mining strategy succeeding in the discovery of new G-protein coupled receptors. *J. Mol. Biol.* **307(3)**, 799-813 (2001).

CAYMAN CHEMICAL  
1180 EAST ELLSWORTH RD  
ANN ARBOR, MI 48108 · USA  
PHONE: [800] 364-9897  
[734] 971-3335  
FAX: [734] 971-3640  
CUSTSERV@CAYMANCHEM.COM  
WWW.CAYMANCHEM.COM