

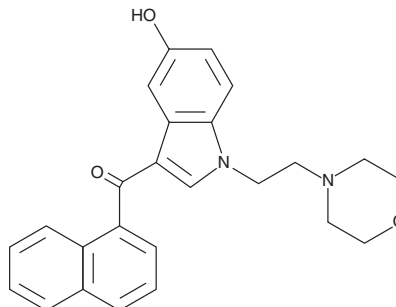
# PRODUCT INFORMATION



## JWH 200 5-hydroxyindole metabolite

Item No. 10745

**CAS Registry No.:** 133438-72-9  
**Formal Name:** (5-hydroxy-1-(2-morpholinoethyl)-1H-indol-3-yl)(naphthalen-1-yl)methanone  
**MF:** C<sub>25</sub>H<sub>24</sub>N<sub>2</sub>O<sub>3</sub>  
**FW:** 400.5  
**Purity:** ≥98%  
**UV/Vis.:** λ<sub>max</sub>: 219, 257, 281, 323 nm  
**Supplied as:** A crystalline solid  
**Storage:** -20°C  
**Stability:** ≥5 years



Information represents the product specifications. Batch specific analytical results are provided on each certificate of analysis.

### Description

JWH 200 is an aminoalkylindole that acts as a cannabinoid (CB) receptor agonist, binding the CB<sub>1</sub> receptor with high-affinity (IC<sub>50</sub> = 7.8-42 nM).<sup>1,2</sup> It is one of several synthetic CBs which have been included in smoking mixtures. JWH 200 5-hydroxyindole metabolite (Item No. 10745) is expected to be a urinary metabolite of JWH 200 based on the metabolism of the closely-related JWH 015 and JWH 018.<sup>3,4</sup> This product is intended for research and forensic applications.

### References

1. Eissenstat, M.A., Bell, M.R., D'Ambra, T.E., *et al.* Aminoalkylindoles: Structure-activity relationships of novel cannabinoid mimetics. *J. Med. Chem.* **38**(16), 3094-3105 (1995).
2. Huffman, J.W., Mabon, R., Wu, M.J., *et al.* 3-indolyl-1-naphthylmethanes: New cannabimimetic indoles provide evidence for aromatic stacking interactions with the CB<sub>1</sub> cannabinoid receptor. *Bioorgan. Med. Chem.* **11**(4), 539-549 (2003).
3. Zhang, Q., Ma, P., Cole, R.B., *et al.* Identification of in vitro metabolites of JWH-015, an aminoalkylindole agonist for the peripheral cannabinoid receptor (CB<sub>2</sub>) by HPLC-MS/MS. *Anal. Bioanal. Chem.* **386**(5), 1345-1355 (2006).
4. Sobolevsky, T., Prasolov, I., and Rodchenkov, G. Detection of JWH-018 metabolites in smoking mixture post-administration urine. *Forensic Sci. Int.* **200**(1-3), 141-147 (2010).

#### WARNING

THIS PRODUCT IS FOR RESEARCH ONLY - NOT FOR HUMAN OR VETERINARY DIAGNOSTIC OR THERAPEUTIC USE.

#### SAFETY DATA

This material should be considered hazardous until further information becomes available. Do not ingest, inhale, get in eyes, on skin, or on clothing. Wash thoroughly after handling. Before use, the user must review the [complete](#) Safety Data Sheet, which has been sent via email to your institution.

#### WARRANTY AND LIMITATION OF REMEDY

Buyer agrees to purchase the material subject to Cayman's Terms and Conditions. Complete Terms and Conditions including Warranty and Limitation of Liability information can be found on our website.

Copyright Cayman Chemical Company, 06/15/2023

#### CAYMAN CHEMICAL

1180 EAST ELLSWORTH RD  
ANN ARBOR, MI 48108 · USA

**PHONE:** [800] 364-9897  
[734] 971-3335

**FAX:** [734] 971-3640

CUSTSERV@CAYMANCHEM.COM  
WWW.CAYMANCHEM.COM