

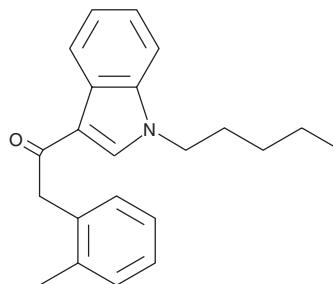
PRODUCT INFORMATION



JWH 251

Item No. 10578

CAS Registry No.: 864445-39-6
Formal Name: 2-(2-methylphenyl)-1-(1-pentyl-1H-indol-3-yl)-ethanone
MF: C₂₂H₂₅NO
FW: 319.4
Purity: ≥98%
UV/Vis.: λ_{max}: 212, 246, 305 nm
Supplied as: A crystalline solid
Storage: -20°C
Stability: ≥5 years



Information represents the product specifications. Batch specific analytical results are provided on each certificate of analysis.

Description

JWH 251 is a cannabimimetic indole that shows a high affinity for the central cannabinoid (CB₁) receptor with a K_i value of 29 nM and a comparatively modest affinity for the peripheral cannabinoid (CB₂) receptor (K_i = 146 nM).¹ JWH 251 stimulates GTPγS binding of CB₁ and CB₂ receptors with EC₅₀ values of 29 and 8.3 nM, respectively.¹ This product is intended for research and forensic applications.

Reference

1. Huffman, J.W., Szklennik, P.V., Almond, A., *et al.* 1-Pentyl-3-phenylacetylindoles, a new class of cannabimimetic indoles. *Bioorg. Med. Chem. Lett.* **15(18)**, 4110-4113 (2005).

WARNING

THIS PRODUCT IS FOR RESEARCH ONLY - NOT FOR HUMAN OR VETERINARY DIAGNOSTIC OR THERAPEUTIC USE.

SAFETY DATA

This material should be considered hazardous until further information becomes available. Do not ingest, inhale, get in eyes, on skin, or on clothing. Wash thoroughly after handling. Before use, the user must review the [complete](#) Safety Data Sheet, which has been sent via email to your institution.

WARRANTY AND LIMITATION OF REMEDY

Buyer agrees to purchase the material subject to Cayman's Terms and Conditions. Complete Terms and Conditions including Warranty and Limitation of Liability information can be found on our website.

Copyright Cayman Chemical Company, 07/18/2023

CAYMAN CHEMICAL

1180 EAST ELLSWORTH RD
ANN ARBOR, MI 48108 · USA

PHONE: [800] 364-9897
[734] 971-3335

FAX: [734] 971-3640

CUSTSERV@CAYMANCHEM.COM
WWW.CAYMANCHEM.COM