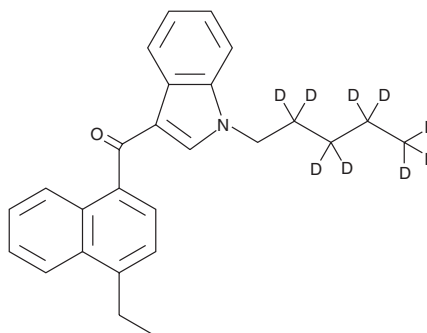


# PRODUCT INFORMATION



**JWH 210-d<sub>9</sub>**  
Item No. 10510

**CAS Registry No.:** 1651833-52-1  
**Formal Name:** (4-ethyl-1-naphthalenyl)(1-pentyl-1H-indol-3-yl)-methanone-d<sub>9</sub>  
**MF:** C<sub>26</sub>H<sub>18</sub>D<sub>9</sub>NO  
**FW:** 378.6  
**Chemical Purity:** ≥98% JWH 210  
**Deuterium Incorporation:** ≥99% deuterated forms (d<sub>1</sub>-d<sub>9</sub>); ≤1% d<sub>0</sub>  
**UV/Vis.:** λ<sub>max</sub>: 222, 247, 316 nm  
**Supplied as:** A solution in methanol  
**Storage:** -20°C  
**Stability:** ≥4 years



Information represents the product specifications. Batch specific analytical results are provided on each certificate of analysis.

## Description

JWH 210-d<sub>9</sub> is intended for use as an internal standard for the quantification of JWH 210 by GC- or LC-MS. The accuracy of the sample weight in this vial is between 5% over and 2% under the amount shown on the vial. If better precision is required, the deuterated standard should be quantitated against a more precisely weighed unlabeled standard by constructing a standard curve of peak intensity ratios (deuterated versus unlabeled).

JWH 210 is a potent cannabimimetic alkylindole, binding the central cannabinoid and peripheral cannabinoid receptors with K<sub>i</sub> values of 0.46 and 0.69 nM, respectively.<sup>1</sup> The effects of JWH 210 in whole cells or organisms have not been evaluated.

## References

1. Huffman, J.W., Zengin, G., Wu, M.-J., *et al.* Structure-activity relationships for 1-alkyl-3-(1-naphthoyl) indoles at the cannabinoid CB<sub>1</sub> and CB<sub>2</sub> receptors: steric and electronic effects of naphthoyl substituents. New highly selective CB<sub>2</sub> receptor agonists. *Bioorg. Med. Chem.* **13**, 89-112 (2005).

### WARNING

THIS PRODUCT IS FOR RESEARCH ONLY - NOT FOR HUMAN OR VETERINARY DIAGNOSTIC OR THERAPEUTIC USE.

### SAFETY DATA

This material should be considered hazardous until further information becomes available. Do not ingest, inhale, get in eyes, on skin, or on clothing. Wash thoroughly after handling. Before use, the user must review the [complete](#) Safety Data Sheet, which has been sent via email to your institution.

### WARRANTY AND LIMITATION OF REMEDY

Buyer agrees to purchase the material subject to Cayman's Terms and Conditions. Complete Terms and Conditions including Warranty and Limitation of Liability information can be found on our website.

Copyright Cayman Chemical Company, 07/18/2023

## CAYMAN CHEMICAL

1180 EAST ELLSWORTH RD  
ANN ARBOR, MI 48108 · USA

**PHONE:** [800] 364-9897  
[734] 971-3335

**FAX:** [734] 971-3640

CUSTSERV@CAYMANCHEM.COM  
WWW.CAYMANCHEM.COM