

# PRODUCT INFORMATION



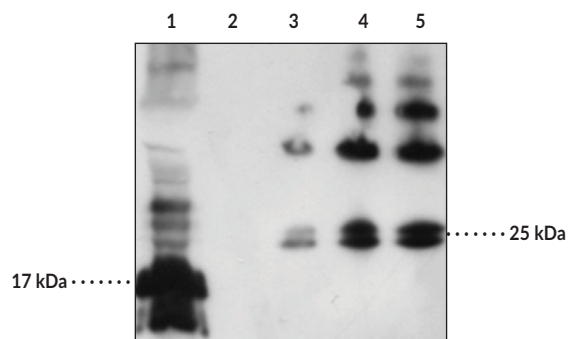
## Adropin Polyclonal Antibody

Item No. 10381

### Overview and Properties

<b>Contents:</b>	This vial contains protein-affinity purified IgG.
<b>Synonym:</b>	Energy Homeostasis-Associated Protein
<b>Immunogen:</b>	Thioredoxin fusion protein containing amino acids 34-76 of human adropin
<b>Species Reactivity:</b>	(+) Human; other species not tested.
<b>Uniprot No.:</b>	Q6UWT2
<b>Form:</b>	Solid
<b>Storage:</b>	-20°C (as supplied)
<b>Stability:</b>	≥3 years
<b>Storage Buffer:</b>	TBS, pH 7.4, after resuspension in 500 µl of double distilled water
<b>Host:</b>	Rabbit
<b>Applications:</b>	ELISA and Western blot (WB); the recommended starting dilution for ELISA is 1:500 to 1:2,000 and 1:200 for WB. Other applications were not tested, therefore optimal working concentration/dilution should be determined empirically.

### Image



Lane 1: Adropin overexpression lysate  
Lane 2: Vector control lysate (HEK293)  
Lane 3: Adropin recombinant protein (5 ng)  
Lane 4: Adropin recombinant protein (10 ng)  
Lane 5: Adropin recombinant protein (25 ng)

**WARNING**  
THIS PRODUCT IS FOR RESEARCH ONLY - NOT FOR HUMAN OR VETERINARY DIAGNOSTIC OR THERAPEUTIC USE.

**SAFETY DATA**  
This material should be considered hazardous until further information becomes available. Do not ingest, inhale, get in eyes, on skin, or on clothing. Wash thoroughly after handling. Before use, the user must review the complete Safety Data Sheet, which has been sent via email to your institution.

**WARRANTY AND LIMITATION OF REMEDY**  
Buyer agrees to purchase the material subject to Cayman's Terms and Conditions. Complete Terms and Conditions including Warranty and Limitation of Liability information can be found on our website.

Copyright Cayman Chemical Company, 11/07/2023

**CAYMAN CHEMICAL**

1180 EAST ELLSWORTH RD

ANN ARBOR, MI 48108 · USA

PHONE: [800] 364-9897

[734] 971-3335

FAX: [734] 971-3640

CUSTSERV@CAYMANCHEM.COM

WWW.CAYMANCHEM.COM

# PRODUCT INFORMATION



## Description

---

Adropin is a 76 amino acid secreted peptide expressed in the brain, liver, and plasma and is encoded by the energy homeostasis associated gene.<sup>1</sup> It is very highly conserved in mammals, and is involved in glucose homeostasis and lipid metabolism.<sup>1</sup> Plasma levels of adropin decrease with age and have been associated with metabolic disorders such as dyslipidemia and insulin resistance.<sup>2</sup> Adropin is involved in post-transcriptional activation of eNOS, the up-regulation of VEGFR2, and activation of the ERK1/2 pathway.<sup>2</sup> Adropin's involvement in endothelial cells results in increased proliferation and migration, and decreased permeability and apoptosis.<sup>3</sup> Cayman's Adropin Polyclonal Antibody can be used for ELISA and Western blot applications. The antibody recognizes adropin at 14-17 kDa from human samples.

## References

---

1. Kumar, K.G., Trevaskis, J.L., Lam, D.D., *et al.* Identification of adropin as a secreted factor linking dietary macronutrient intake with energy homeostasis and lipid metabolism. *Cell Metab.* **8(6)**, 468-481 (2008).
2. Butler, A.A., Tam, C.S., Stanhope, K.L., *et al.* Low circulating adropin concentrations with obesity and aging correlate with risk factors for metabolic disease and increase after gastric bypass surgery in humans. *J. Clin. Endocrinol. Metab.* **97(10)**, 3783-3791 (2012).
3. Lovren, F., Pan, Y., Quan, A., *et al.* Adropin is a novel regulator of endothelial function. *Circulation* **122(11 suppl)**, S185-S192 (2010).

CAYMAN CHEMICAL  
1180 EAST ELLSWORTH RD  
ANN ARBOR, MI 48108 · USA  
PHONE: [800] 364-9897  
[734] 971-3335  
FAX: [734] 971-3640  
CUSTSERV@CAYMANCHEM.COM  
WWW.CAYMANCHEM.COM