

# PRODUCT INFORMATION

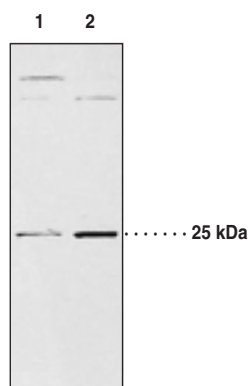


## AdPLA<sub>2</sub> Polyclonal Antibody Item No. 10337

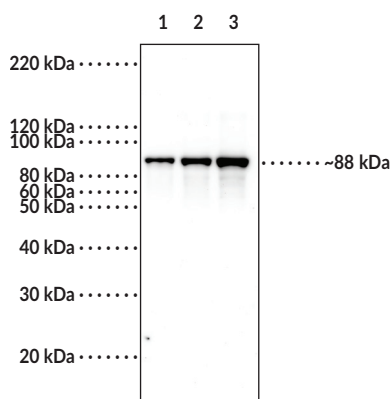
### Overview and Properties

<b>Contents:</b>	This vial contains 500 µl of peptide affinity-purified polyclonal antibody.
<b>Synonyms:</b>	Adipose Phospholipase A <sub>2</sub> , HRas-Like Suppressor 3, Phospholipase A and Acyltransferase 3, sPLA16, PLAAT3
<b>Immunogen:</b>	Peptide from the C-terminal region of human AdPLA <sub>2</sub>
<b>Species Reactivity:</b>	(+) Human and mouse; other species not tested
<b>Uniprot No.:</b>	P53816
<b>Form:</b>	Liquid
<b>Storage:</b>	-20°C (as supplied)
<b>Stability:</b>	≥3 years
<b>Storage Buffer:</b>	TBS, pH 7.4, with 50% glycerol, 0.1% BSA, and 0.02% sodium azide
<b>Host:</b>	Rabbit
<b>Application:</b>	Western blot (WB); the recommended starting dilution for WB is 1:200. Other applications were not tested, therefore optimal working concentration/dilution should be determined empirically.

### Images



Lane 1: 3T3 Control Lysate Day 7 (50 µg)  
Lane 2: 3T3 Differentiated Adipocyte Lysate Day 7 (50 µg)



Lane 1: Rec. AdPLA2 Fusion Protein (0.5 µg)  
Lane 2: Rec. AdPLA2 Fusion Protein (1 µg)  
Lane 3: Rec. AdPLA2 Fusion Protein (2 µg)

The recombinant AdPLA2 fusion protein is a fusion of NusA and AdPLA2. This fusion migrates to approximately 88 kDa by SDS-PAGE.

WARNING  
THIS PRODUCT IS FOR RESEARCH ONLY - NOT FOR HUMAN OR VETERINARY DIAGNOSTIC OR THERAPEUTIC USE.

SAFETY DATA  
This material should be considered hazardous until further information becomes available. Do not ingest, inhale, get in eyes, on skin, or on clothing. Wash thoroughly after handling. Before use, the user must review the [complete](#) Safety Data Sheet, which has been sent via email to your institution.

WARRANTY AND LIMITATION OF REMEDY  
Buyer agrees to purchase the material subject to Cayman's Terms and Conditions. Complete Terms and Conditions including Warranty and Limitation of Liability information can be found on our website.

Copyright Cayman Chemical Company, 11/03/2023

CAYMAN CHEMICAL  
1180 EAST ELLSWORTH RD  
ANN ARBOR, MI 48108 · USA  
PHONE: [800] 364-9897  
[734] 971-3335  
FAX: [734] 971-3640  
CUSTSERV@CAYMANCHEM.COM  
WWW.CAYMANCHEM.COM

# PRODUCT INFORMATION



## Description

---

AdPLA<sub>2</sub> is the first member of Group XVI phospholipase A<sub>2</sub> (PLA<sub>2</sub>). The PLA<sub>2</sub> superfamily consists of multiple enzymes that catalyze the hydrolysis of fatty acids from the *sn*-2 position in phospholipids. This pH- and calcium-dependent PL is highly expressed in adipose tissue and is associated with adipocyte differentiation and lipolysis. It has been implicated as a major player in the development of obesity.<sup>1,2</sup> Human AdPLA<sub>2</sub> is a 162 amino acid protein with a calculated molecular weight of 18 kDa. It contains a transmembrane region and shares 70-75% sequence similarity with the mouse and rat proteins, respectively. Cayman's antibody was raised against the C-terminal region of the human protein.

## References

---

1. Jaworski, K., Ahmadian, M., Duncan, R.E., *et al.* AdPLA ablation increases lipolysis and prevents obesity induced by high-fat feeding or leptin deficiency. *Nature Med.* **15(2)**, 159-168 (2009).
2. Duncan, R.E., Sarkadi-Nagy, E., Jaworski, K., *et al.* Identification and functional characterization of adipose-specific phospholipase A<sub>2</sub> (AdPLA). *J. Biol. Chem.* **283(37)**, 25428-25436 (2008).

CAYMAN CHEMICAL  
1180 EAST ELLSWORTH RD  
ANN ARBOR, MI 48108 · USA  
PHONE: [800] 364-9897  
[734] 971-3335  
FAX: [734] 971-3640  
CUSTSERV@CAYMANCHEM.COM  
WWW.CAYMANCHEM.COM