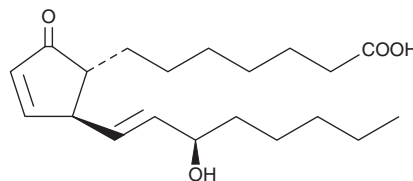


# PRODUCT INFORMATION



## 15-*epi* Prostaglandin A<sub>1</sub> Item No. 10070

**CAS Registry No.:** 20897-92-1  
**Formal Name:** 15R-hydroxy-9-oxo-prosta-10,13R-dien-1-oic acid  
**Synonym:** 15-*epi* PGA<sub>1</sub>  
**MF:** C<sub>20</sub>H<sub>32</sub>O<sub>4</sub>  
**FW:** 336.5  
**Purity:** ≥98%  
**UV/Vis.:** λ<sub>max</sub>: 217 nm  
**Supplied as:** A solution in methyl acetate  
**Storage:** -20°C  
**Stability:** ≥2 years



Information represents the product specifications. Batch specific analytical results are provided on each certificate of analysis.

### Laboratory Procedures

15-*epi* Prostaglandin A<sub>1</sub> (15-*epi* PGA<sub>1</sub>) is supplied as a solution in methyl acetate. To change the solvent, simply evaporate the methyl acetate under a gentle stream of nitrogen and immediately add the solvent of choice. Solvents such as ethanol, DMSO, and dimethyl formamide purged with an inert gas can be used. The solubility of 15-*epi* PGA<sub>1</sub> in these solvents is approximately 100, 75, and 50 mg/ml, respectively.

15-*epi* PGA<sub>1</sub> is sparingly soluble in aqueous buffers. For maximum solubility in aqueous buffers, the methyl acetate solution of 15-*epi* PGA<sub>1</sub> should be diluted with the aqueous buffer of choice. The solubility of 15-*epi* PGA<sub>1</sub> in PBS (pH 7.2) is approximately 2.4 mg/ml. We do not recommend storing the aqueous solution for more than one day.

### Description

15-*epi* PGA<sub>1</sub> is the 15(R) stereoisomer of PGA<sub>1</sub>. Prostaglandins of the A-series, including some with 15(R) stereochemistry, are natural products of gorgonian soft corals. PGA<sub>1</sub> causes renal vasodilation, increased urine sodium excretion, and decreased arterial pressure in hypertensive patients.<sup>1</sup> There are no published reports on the biological activity of 15-*epi* PGA<sub>1</sub> at this time.

### Reference

1. Krakoff, L.R., Vlachakis, N., Mendlowitz, M., *et al.* Differential effect of prostaglandin A<sub>1</sub> in hypertensive patients with low, normal and high renin. *Clin. Sci. Mol. Med. Suppl.* 2, 311s-313s (1975).

#### WARNING

THIS PRODUCT IS FOR RESEARCH ONLY - NOT FOR HUMAN OR VETERINARY DIAGNOSTIC OR THERAPEUTIC USE.

#### SAFETY DATA

This material should be considered hazardous until further information becomes available. Do not ingest, inhale, get in eyes, on skin, or on clothing. Wash thoroughly after handling. Before use, the user must review the [complete](#) Safety Data Sheet, which has been sent via email to your institution.

#### WARRANTY AND LIMITATION OF REMEDY

Buyer agrees to purchase the material subject to Cayman's Terms and Conditions. Complete Terms and Conditions including Warranty and Limitation of Liability information can be found on our website.

Copyright Cayman Chemical Company, 02/27/2024

#### CAYMAN CHEMICAL

1180 EAST ELLSWORTH RD  
ANN ARBOR, MI 48108 · USA

**PHONE:** [800] 364-9897  
[734] 971-3335

**FAX:** [734] 971-3640

CUSTSERV@CAYMANCHEM.COM  
WWW.CAYMANCHEM.COM