



Cholesterol Cell-Based Detection Assay Kit

Item No. 10009779

www.caymanchem.com

Customer Service 800.364.9897

Technical Support 888.526.5351

1180 E. Ellsworth Rd • Ann Arbor, MI • USA

TABLE OF CONTENTS

GENERAL INFORMATION	3	Materials Supplied
	3	Safety Data
	4	Precautions
	4	If You Have Problems
	4	Storage and Stability
	4	Materials Needed but Not Supplied
INTRODUCTION	5	Background
	6	About This Assay
PRE-ASSAY PREPARATION	7	Reagent Preparation
ASSAY PROTOCOL	8	Treatment of the Cells
	8	Histochemical Staining Procedure
PERFORMANCE CHARACTERISTICS	9	Typical Staining Results
RESOURCES	10	References
	11	Notes
	11	Warranty and Limitation of Remedy

GENERAL INFORMATION

Materials Supplied

Kit will arrive packaged as a -20°C kit. For best results, remove components and store as stated below.

Item Number	Item	100 Tests Quantity	Storage
10009899	Cell-Based Assay Fixative	2 vials	RT
10009866	Cell-Based Assay Wash Buffer	1 vial	RT
10009867	Cholesterol Detection Filipin III	1 vial	-20°C
10009868	Cholesterol Detection Assay Buffer	1 vial	RT
10009869	Cell-Based Assay U-18666A	1 vial	-20°C

If any of the items listed above are damaged or missing, please contact our Customer Service department at (800) 364-9897 or (734) 971-3335. We cannot accept any returns without prior authorization.



WARNING: THIS PRODUCT IS FOR RESEARCH ONLY - NOT FOR HUMAN OR VETERINARY DIAGNOSTIC OR THERAPEUTIC USE.

Safety Data

This material should be considered hazardous until further information becomes available. Do not ingest, inhale, get in eyes, on skin, or on clothing. Wash thoroughly after handling. Before use, the user must review the complete Safety Data Sheet, which has been sent *via* email to your institution.

Precautions

Please read these instructions carefully before beginning this assay.

If You Have Problems

Technical Service Contact Information

Phone: 888-526-5351 (USA and Canada only) or 734-975-3888

Fax: 734-971-3640

Email: techserv@caymanchem.com

In order for our staff to assist you quickly and efficiently, please be ready to supply the lot number of the kit (found on the outside of the box).

Storage and Stability

This kit will perform as specified if stored as directed and used before the expiration date indicated on the outside of the box.

Materials Needed But Not Supplied

1. A 6-, 12-, 24-, or 96-well plate for culturing cells.
2. A fluorescence microscope equipped with a UV filter set capable of excitation and emission wavelengths of 340-380 nm and 385-470 nm, respectively.

INTRODUCTION

Background

Cholesterol is both an important structural component of cell membranes and an early intermediate in hormone and bile acid biosynthesis. Cholesterol is not uniformly distributed among cellular membranes, but rather there are structurally and kinetically distinct cholesterol rich and poor domains. Under normal conditions, as much as 80-90% of total cellular cholesterol is present at the plasma membrane, whereas very little cholesterol resides in the endoplasmic reticulum and inner mitochondrial membranes.¹ Cholesterol that is acquired by internalization and lysosomal hydrolysis of plasma lipoproteins, such as low-density lipoprotein (LDL), or synthesized in the endoplasmic reticulum is rapidly transported to the plasma membrane and integrated into the plasma membrane lipid pool. Within cells, intracellular cholesterol may move to different compartments through vesicular or nonvesicular pathways such as those mediated by diffusible carrier proteins.² Defects in these transport pathways can alter cellular cholesterol metabolism resulting in pathological states. The mechanism for the ensuing movement of cholesterol from intracellular sites to their ultimate cellular destination is an unresolved question of fundamental importance in the areas of cell biology and medicine. Thus, defining mechanisms of intracellular cholesterol transport and identifying the cellular factors involved are of great interest.

Filipin III is the predominant isomer of filipin, the collective name given to four isomeric polyene macrolides isolated from cultures of *S. filipinensis*. Filipin has been widely used as a probe for sterol location in biological membranes.^{3,4} Interaction with cholesterol alters the filipin absorption and fluorescence spectra allowing visualization with a fluorescence microscope capable of excitation at 340-380 nm and emission at 385-470 nm.⁵ Filipin's ease of use makes it a convenient tool for the histochemical identification of unesterified cholesterol both *in vitro* and *in vivo*.

About This Assay

Cayman's Cholesterol Cell-Based Detection Assay Kit includes filipin III, fixative, and wash buffer in a ready to use format. It provides a simple fluorometric method to study mechanisms and biological factors that regulate cholesterol metabolism or movement within cells. A cholesterol trafficking inhibitor, U-18666A, is included as a positive control.

PRE-ASSAY PREPARATION

Reagent Preparation

NOTE: Filipin III is light sensitive. Do not expose to direct intense light.

Preparing the Filipin III Stock Solution

Dissolve the whole vial of Cholesterol Detection Filipin III (Item No. 10009867) in 200 μ l of 100% ethanol. We highly recommend that you make small aliquots and store them at -80°C . *NOTE: Filipin III is very unstable in solution and its activity decreases significantly with each use.*

ASSAY PROTOCOL

The following protocol is designed for a 96-well plate. Adjust volumes accordingly for other sizes of plates.

Treatment of the Cells

1. Seed a 96-well plate with 3×10^4 cells/well. Grow cells overnight.
2. The next day, treat cells with experimental compounds or vehicle control for 48-72 hours, or for the period of time used in your typical experimental protocol. Cell-Based Assay U-18666A (Item No. 10009869), a cholesterol transport inhibitor, is included in the kit to be used as a positive control (provided at a concentration of 2.5 mM). We recommend that you use serial dilutions of U-18666A starting at 1.25 μ M.
3. Examine cholesterol localization using the following staining procedure below.

Histochemical staining procedure

NOTE: Perform all steps at room temperature.

1. Remove most of the culture medium from the wells.
2. Fix the cells with Cell-Based Assay Fixative Solution (Item No. 10009899) for 10 minutes.
3. Wash the cells with Cell-Based Assay Wash Buffer (Item No. 10009866), three times, for five minutes each.
4. Dilute the Filipin III Stock Solution (prepared above as described on page 7) 1:100 in Cholesterol Detection Assay Buffer (Item No. 10009868). Add 100 μ l of this Filipin III Solution to each well. Incubate in the dark for 30-60 minutes.
5. Wash the cells with wash buffer, two times, for five minutes each.
6. Examine the staining using a fluorescent microscope using an excitation of 340-380 nm and emission of 385-470 nm. Filipin fluorescent staining photobleaches very rapidly, thus the sample should be analyzed immediately.

PERFORMANCE CHARACTERISTICS

Typical Staining Results

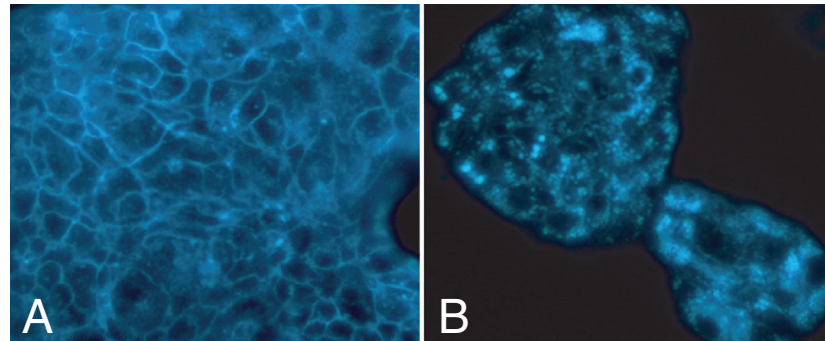


Figure 1: Accumulation of cholesterol inside HepG2 cells in response to 1.25 μ M U-18666A (Item No. 10009085). HepG2 cells were seeded in a 96-well plate at a density of 3×10^4 cells/well and cultured overnight. The next day, cells were treated with DMSO (vehicle) or 1.25 μ M U-18666A for 48 hours. *Panel A:* Cells treated with DMSO alone demonstrate that majority of cholesterol is localized on the plasma membrane. *Panel B:* U-18666A treatment for 48 hours induces intracellular accumulation of cholesterol droplets, indicating blockage of intracellular cholesterol transport.

References

1. Mukherjee, S., Zha, X., Tabas, I., *et al.* Cholesterol distribution in living cells: Fluorescence imaging using dehydrogosterol as a fluorescent cholesterol analog. *Biophys. J.* **75**, 1915-1925 (1998).
2. Soccio, R.E. and Breslow, J.L. Intracellular cholesterol transport. *Arterioscler. Thromb. Vasc. Biol.* **24**, 1150-1160 (2004).
3. Miller, R.G. Mini Review. The use and abuse of filipin to localize cholesterol in membranes. *Cell Biology International Reports* **8(7)**, 519-535 (1984).
4. Drabikowski, W., Lagwinska, E., and Sarzala, M.G. Filipin as a fluorescent probe for the location of cholesterol in the membranes of fragmented sarcoplasmic reticulum. *Biochim. Biophys. Acta* **291**, 61-70 (1973).
5. Castanho, M.A.R.B., Coutinho, A., and Prieto, M.J.E. Absorption and fluorescence spectra of polyene antibiotics in the presence of cholesterol. *J. Biol. Chem.* **267**, 204-209 (1992).

Warranty and Limitation of Remedy

Buyer agrees to purchase the material subject to Cayman's Terms and Conditions. Complete Terms and Conditions including Warranty and Limitation of Liability information can be found on our website.

This document is copyrighted. All rights are reserved. This document may not, in whole or part, be copied, photocopied, reproduced, translated, or reduced to any electronic medium or machine-readable form without prior consent, in writing, from Cayman Chemical Company.

©07/21/2016, Cayman Chemical Company, Ann Arbor, MI, All rights reserved.
Printed in U.S.A.

