

PRODUCT INFORMATION



1-Palmitoyl-2-Linoleoyl-*sn*-glycero-3-PE

Item No. 10007072

CAS Registry No.: 26662-95-3
Formal Name: 9Z,12Z-octadecadienoic acid, (1R)-1-[[[(2-aminoethoxy)hydroxyphosphinyl]oxy]methyl]-2-[(1-oxohexadecyl)oxy]ethyl ester

Synonyms: 1-Palmitoyl-2-Linoleoyl PE, PLPE,
(1-Palmitoyl, 2-Linoleoyl)-Phosphatidylethanolamine,
(1-Palmitoyl, 2-Linoleoyl)-Phosphoethanolamine

MF: C₃₉H₇₄NO₈P

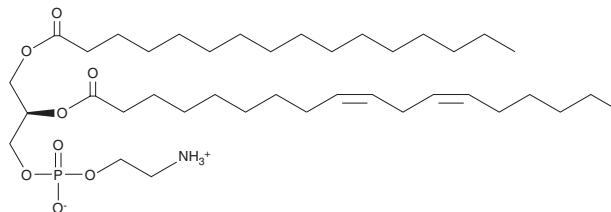
FW: 716.0

Purity: ≥98%

Supplied as: A crystalline solid

Storage: -20°C

Stability: ≥4 years



Information represents the product specifications. Batch specific analytical results are provided on each certificate of analysis.

Laboratory Procedures

1-Palmitoyl-2-linoleoyl-*sn*-glycero-3-PE is supplied as a crystalline solid. A stock solution may be made by dissolving the 1-palmitoyl-2-linoleoyl-*sn*-glycero-3-PE in the solvent of choice, which should be purged with an inert gas. 1-Palmitoyl-2-linoleoyl-*sn*-glycero-3-PE is soluble in organic solvents such as ethanol, methanol, and chloroform. The solubility of 1-palmitoyl-2-linoleoyl-*sn*-glycero-3-PE in these solvents is approximately 1, 5, and 50 mg/ml, respectively.

Description

1-Palmitoyl-2-linoleoyl-*sn*-glycero-3-PE (PLPE) is one of the many phosphatidylethanolamines that may be present in cellular membranes. It has been used in studies involving the biosynthesis of anandamide via the phospholipase A₂ (PLA₂) and lysoPLD pathways.¹ PLPE can also be used as a specific substrate to assess the activity of sPLA₂-IIA in the presence of other phospholipids.²

References

1. Sun, Y.-X., Tsubio, K., Okamoto, Y., *et al.* Biosynthesis of anandamide and N-palmitoylethanolamide by sequential actions of phospholipase A₂ and lysophosphase D. *J. Biochem.* **380 (Pt 3)**, 749-755 (2004).
2. Yang, H.-C., Mosior, M., Johnson, C.A., *et al.* Group-specific assays that distinguish between the four major types of mammalian phospholipase A₂. *Anal. Biochem.* **269(2)**, 278-288 (1999).

WARNING

THIS PRODUCT IS FOR RESEARCH ONLY - NOT FOR HUMAN OR VETERINARY DIAGNOSTIC OR THERAPEUTIC USE.

SAFETY DATA

This material should be considered hazardous until further information becomes available. Do not ingest, inhale, get in eyes, on skin, or on clothing. Wash thoroughly after handling. Before use, the user must review the [complete](#) Safety Data Sheet, which has been sent via email to your institution.

WARRANTY AND LIMITATION OF REMEDY

Buyer agrees to purchase the material subject to Cayman's Terms and Conditions. Complete Terms and Conditions including Warranty and Limitation of Liability information can be found on our website.

Copyright Cayman Chemical Company, 01/17/2024

CAYMAN CHEMICAL

1180 EAST ELLSWORTH RD

ANN ARBOR, MI 48108 · USA

PHONE: [800] 364-9897

[734] 971-3335

FAX: [734] 971-3640

CUSTSERV@CAYMANCHEM.COM

WWW.CAYMANCHEM.COM