

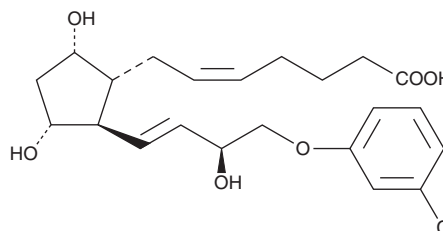
# PRODUCT INFORMATION



## (+)-15-*epi* Cloprostenol

Item No. 10006692

**CAS Registry No.:** 54276-22-1  
**Formal Name:** (+)-9 $\alpha$ ,11 $\alpha$ ,15S-trihydroxy-16-(3-chlorophenoxy)-17,18,19,20-tetranorprosta-5Z,13E-dien-1-oic acid  
**Synonyms:** D-Cloprostenol, (+)-15(S)-Cloprostenol  
**MF:** C<sub>22</sub>H<sub>29</sub>ClO<sub>6</sub>  
**FW:** 424.9  
**Purity:**  $\geq$ 98%  
**UV/Vis.:**  $\lambda_{\text{max}}$ : 204, 275 nm  
**Supplied as:** A solution in ethanol  
**Storage:** -20°C  
**Stability:**  $\geq$ 2 years



Information represents the product specifications. Batch specific analytical results are provided on each certificate of analysis.

### Laboratory Procedures

(+)-15-*epi* Cloprostenol is supplied as a solution in ethanol. To change the solvent, simply evaporate the ethanol under a gentle stream of nitrogen and immediately add the solvent of choice. Solvents such as DMSO and dimethyl formamide purged with an inert gas can be used. The solubility of (+)-15-*epi* cloprostenol in these solvents is approximately 50 mg/ml.

(+)-15-*epi* Cloprostenol is sparingly soluble in aqueous buffers. For maximum solubility in aqueous buffers, the ethanolic solution of (+)-15-*epi* cloprostenol should be diluted with the aqueous buffer of choice. The solubility of (+)-15-*epi* cloprostenol in PBS (pH 7.2) is approximately 1 mg/ml. We do not recommend storing the aqueous solution for more than one day.

### Description

Cloprostenol is a synthetic prostaglandin F<sub>2 $\alpha$</sub>  (PGF<sub>2 $\alpha$</sub> ) analog and a potent FP receptor agonist. (+)-15-*epi* Cloprostenol is the 15(S), or 15 $\beta$ -hydroxy enantiomer of (+)-cloprostenol. This epimer is less active by several orders of magnitude as an FP receptor ligand when compared to 15(R)-cloprostenol. However, the specific activity of this isomer has not been well studied.

#### WARNING

THIS PRODUCT IS FOR RESEARCH ONLY - NOT FOR HUMAN OR VETERINARY DIAGNOSTIC OR THERAPEUTIC USE.

#### SAFETY DATA

This material should be considered hazardous until further information becomes available. Do not ingest, inhale, get in eyes, on skin, or on clothing. Wash thoroughly after handling. Before use, the user must review the [complete](#) Safety Data Sheet, which has been sent via email to your institution.

#### WARRANTY AND LIMITATION OF REMEDY

Buyer agrees to purchase the material subject to Cayman's Terms and Conditions. Complete Terms and Conditions including Warranty and Limitation of Liability information can be found on our website.

Copyright Cayman Chemical Company, 10/13/2022

#### CAYMAN CHEMICAL

1180 EAST ELLSWORTH RD  
ANN ARBOR, MI 48108 · USA

**PHONE:** [800] 364-9897  
[734] 971-3335

**FAX:** [734] 971-3640

CUSTSERV@CAYMANCHEM.COM  
WWW.CAYMANCHEM.COM